

温度时间:

正火 860℃ 保温时间 15min

淬火 860℃ 保温时间 15min

高温回火 550℃ 保温时间 50min

中温回火 400℃ 保温时间 60min

低温回火 260℃ 保温时间 60min

硬度值

正火:22.4 22.9 22.3 23.4 24.0

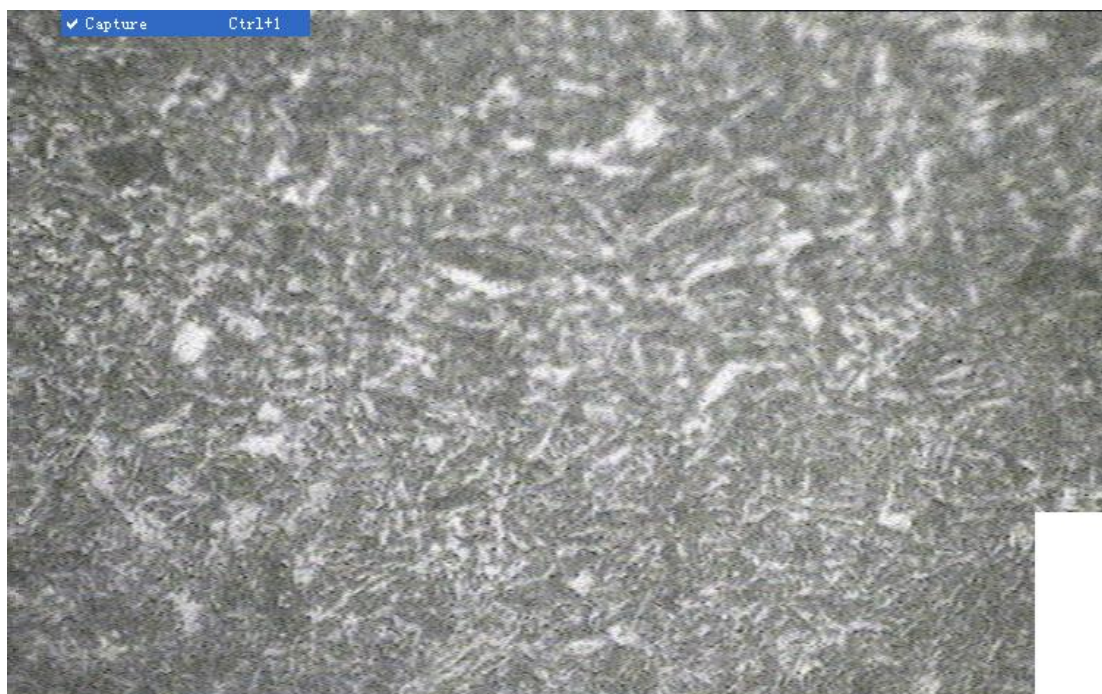
油淬:50.8 51.9 51.1 51.1 52.1

水淬:55.4 54.6 52.3 55.6 53.3

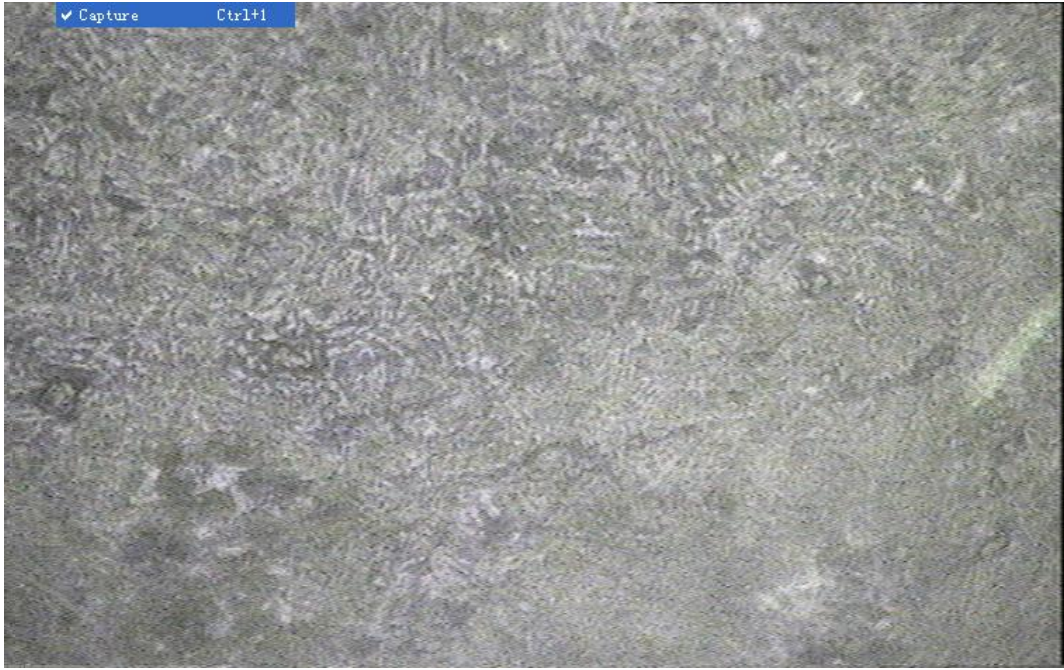
水淬高温回火:35.8 34.8 35.6 35.9 35.1

水淬中温回火:43.4 42.4 43.3 42.3 42.6

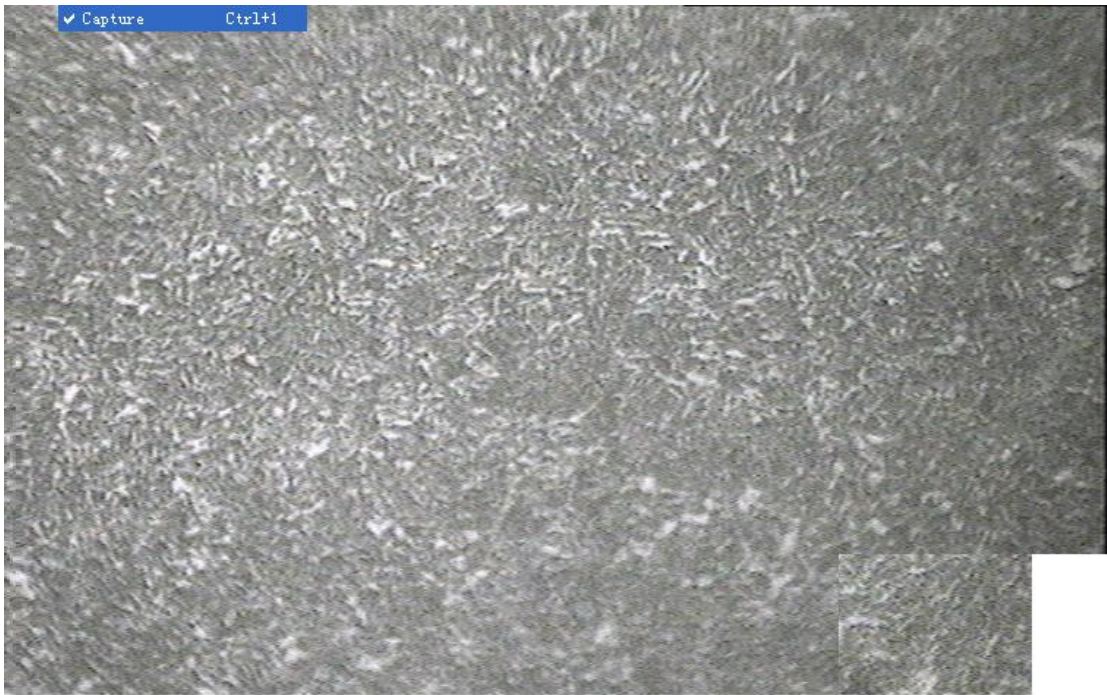
水淬低温回火:51.2 51.5 50.8 51.0 50.6



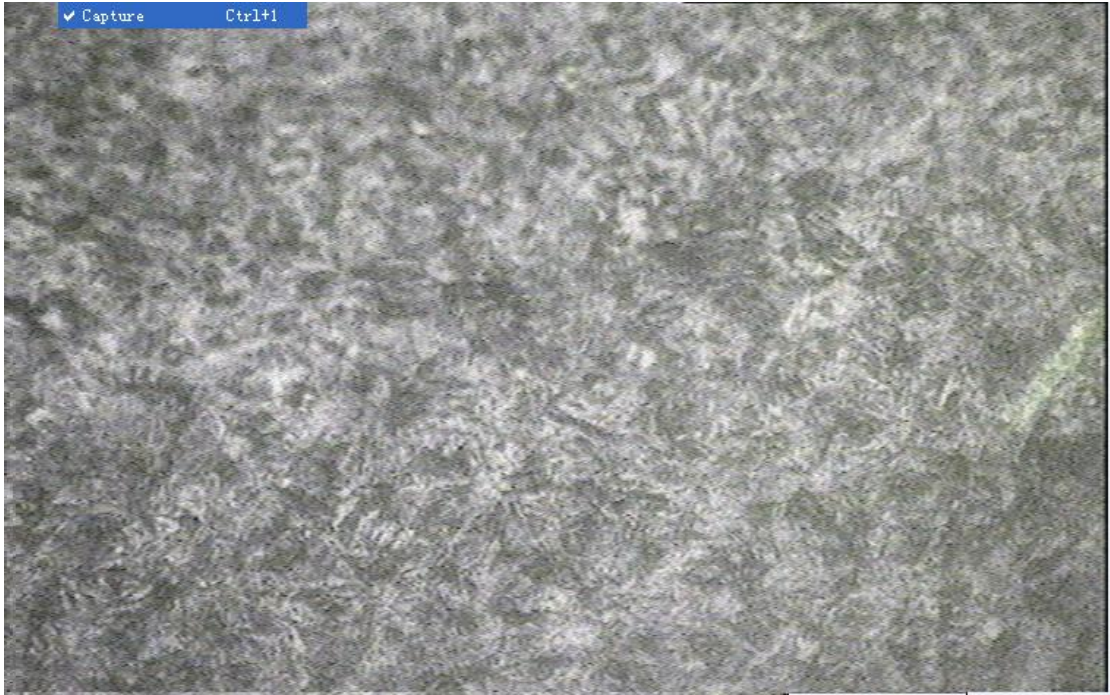
正火 35CrMo,400 倍



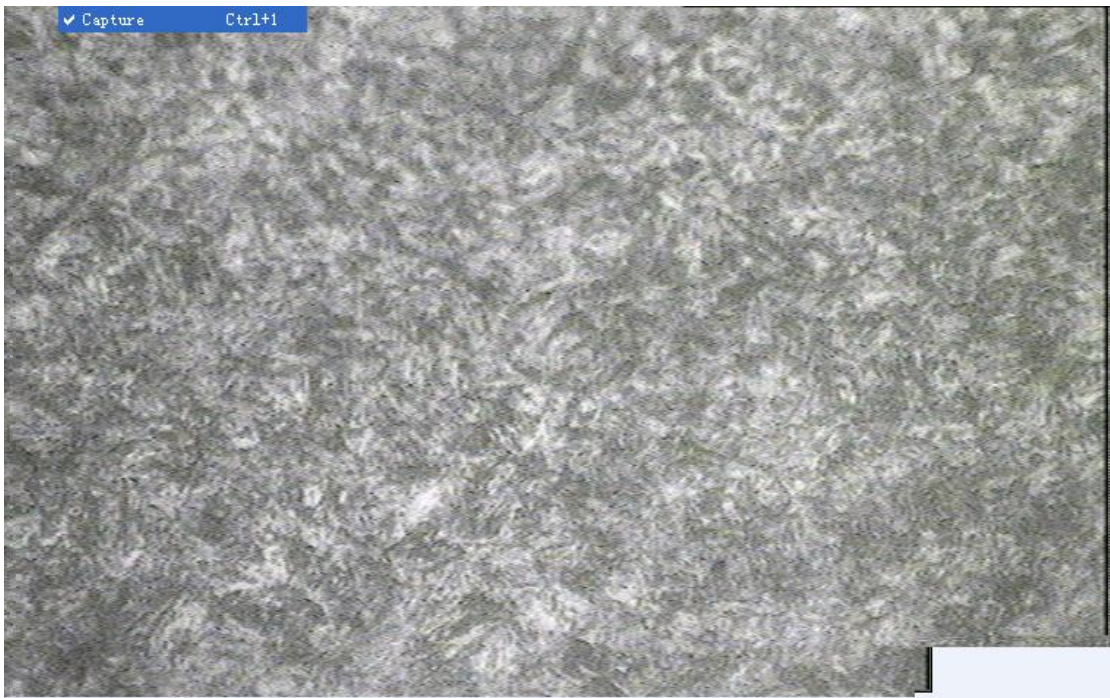
正火 35CrMo,400-2 倍



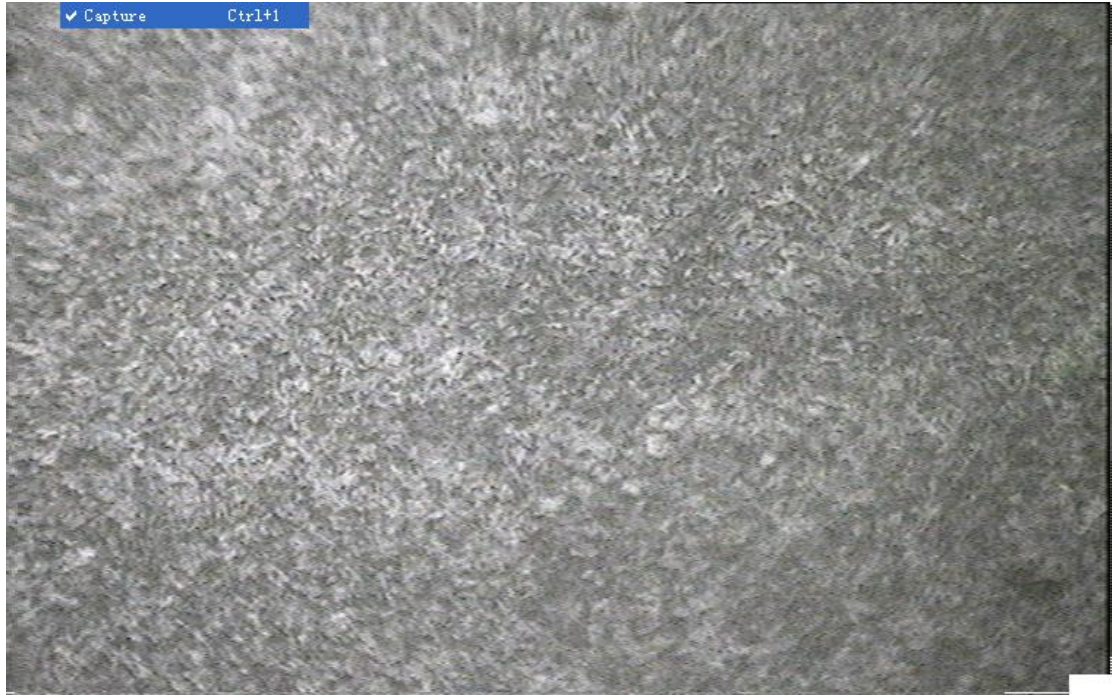
正火 35CrMo,200 倍



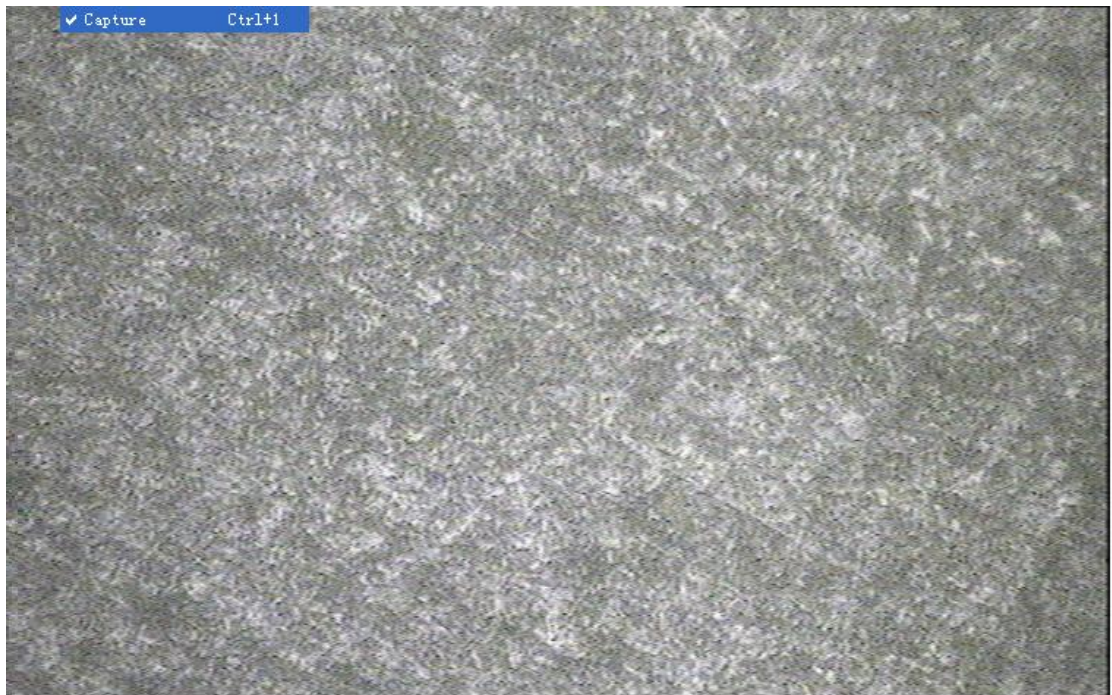
35CrMo 油淬 400-2



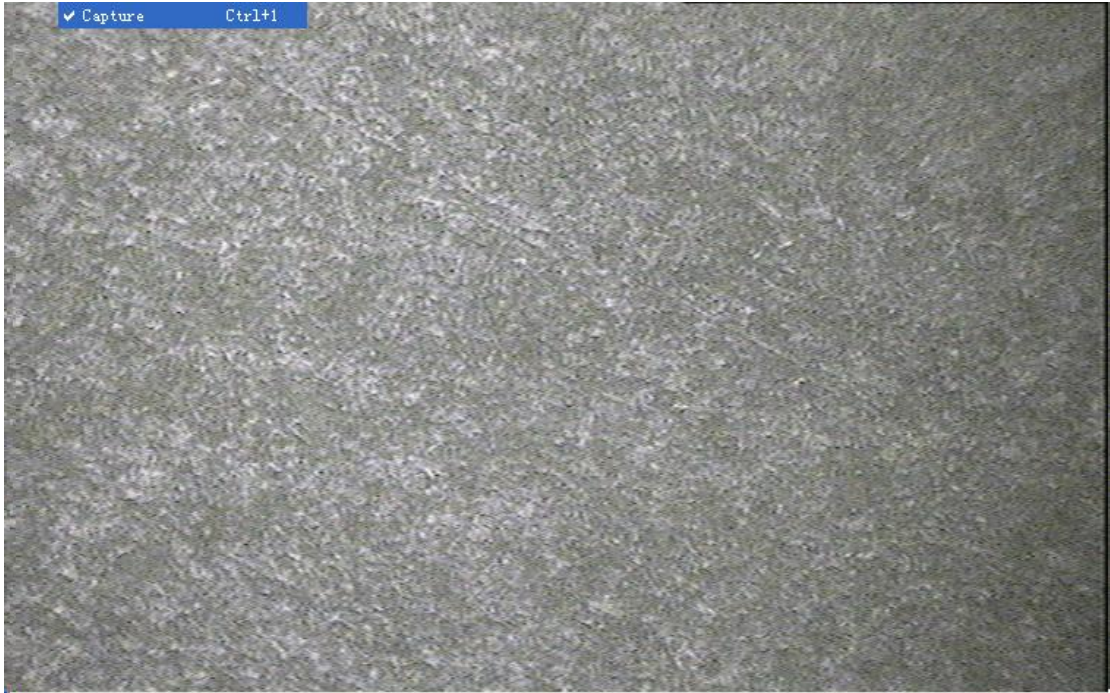
35CrMo 油淬 400



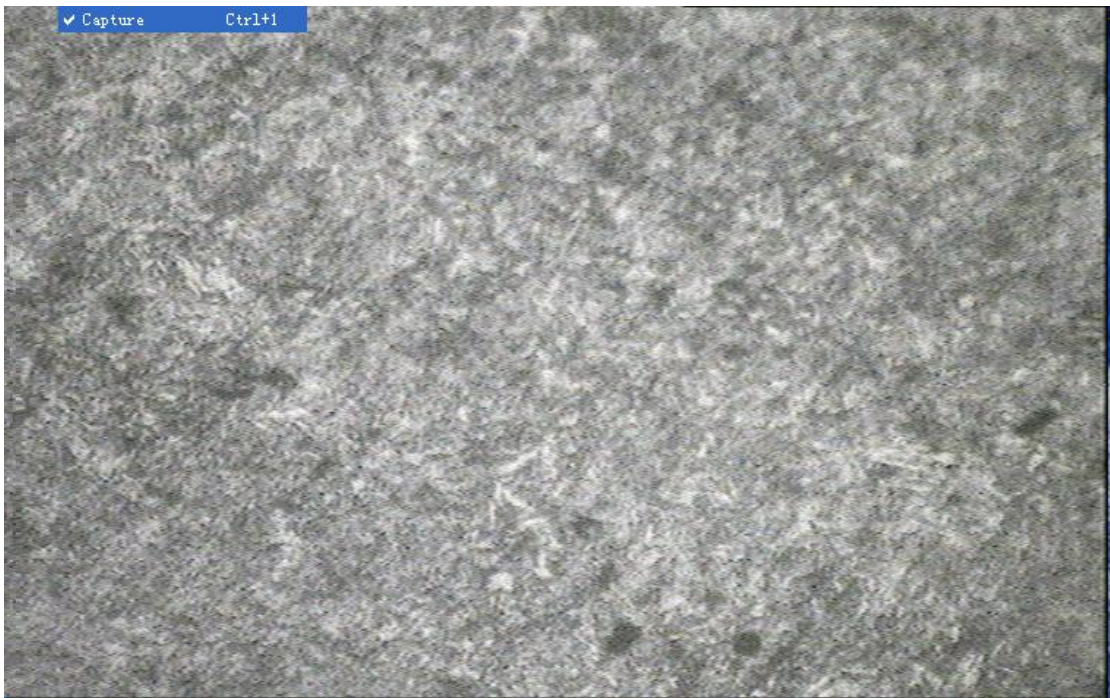
35CrMo 油 淬 200



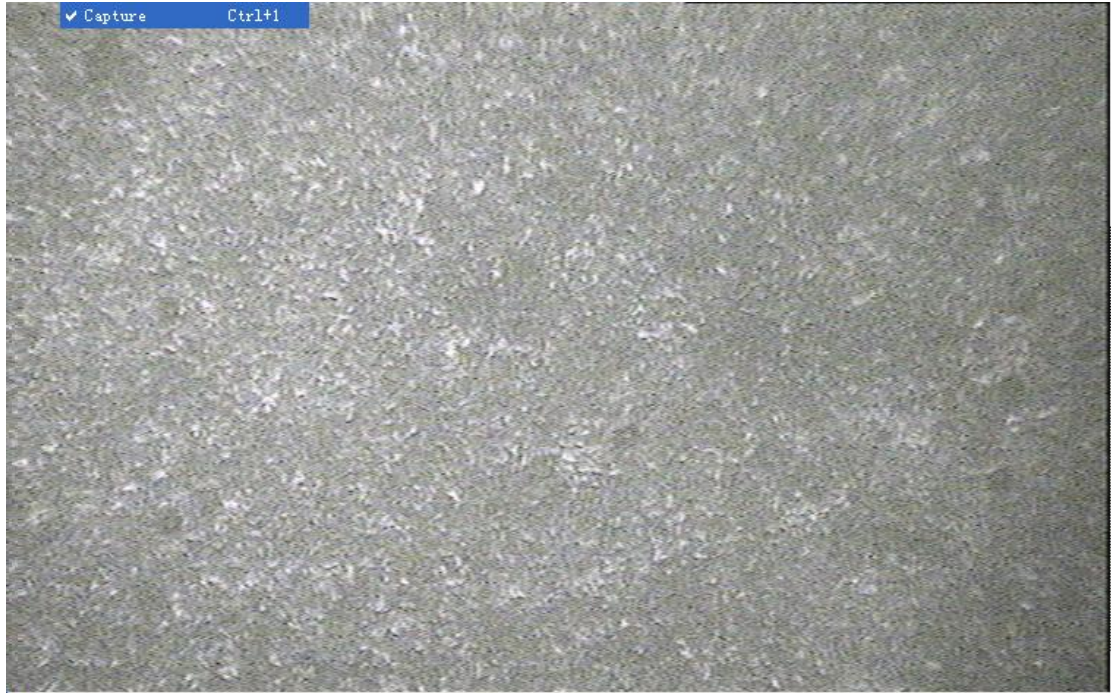
35CrMo 中回 400



35CrMo 中回 200



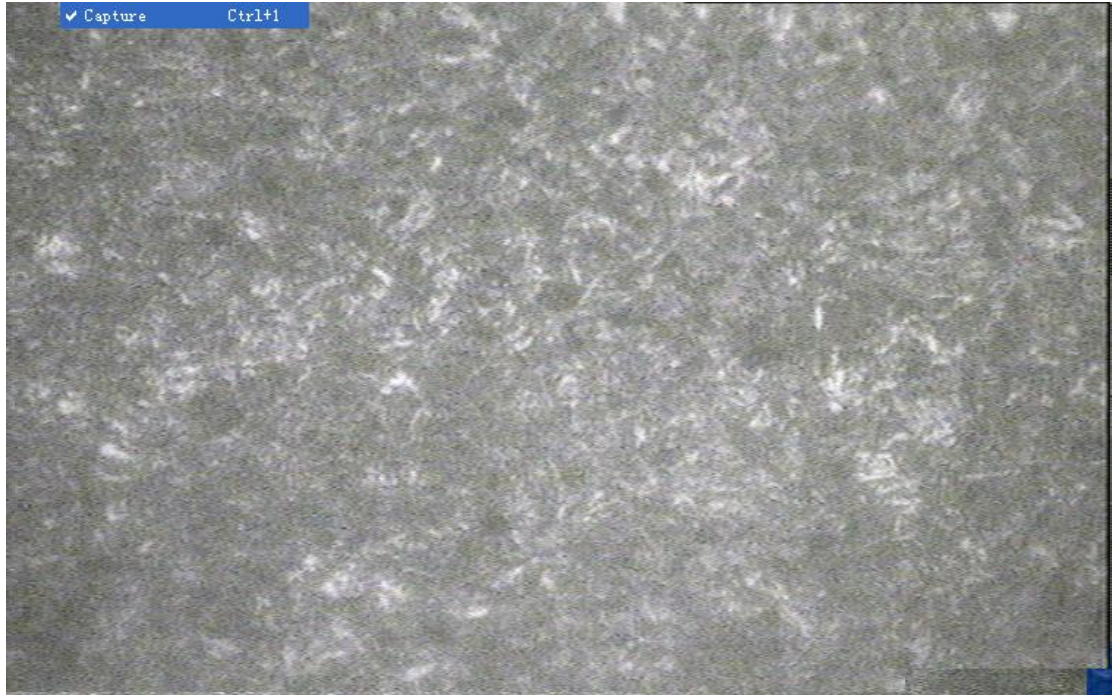
高回 35CrMo,400



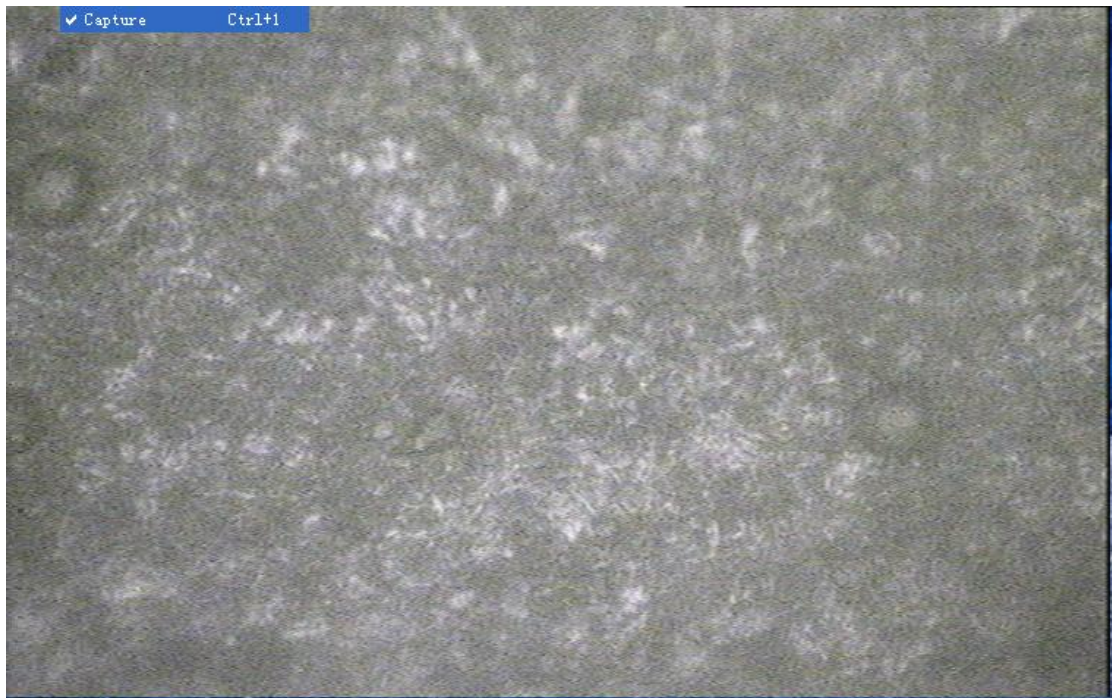
35CrMo 高温回火 200



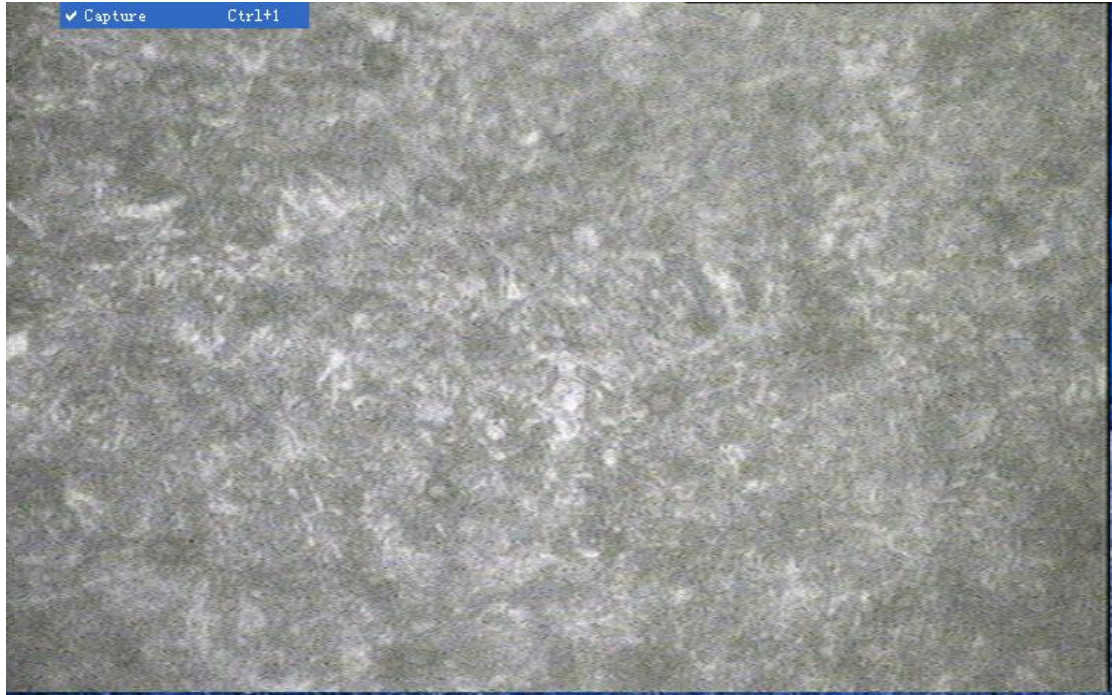
35CrMo 高回，200



35CrMo 低温回火 400-3



35CrMo 低温回火 400-2



35CrMo 低温回火 400



35CrMo 低温回火 200





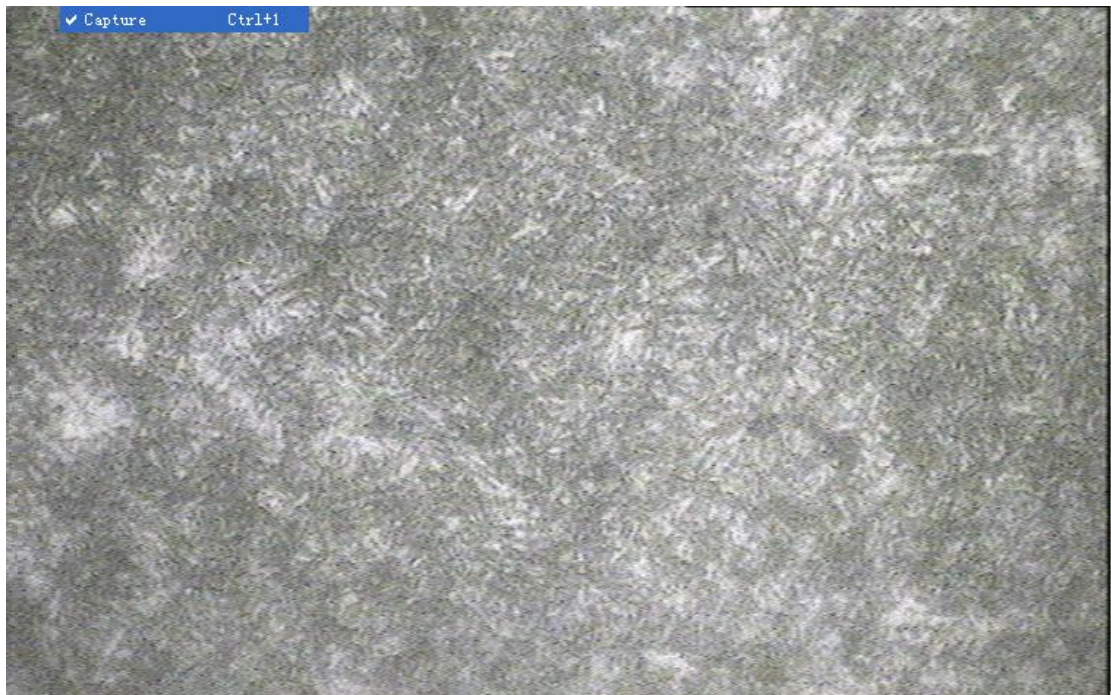
35CrMo 低温回火 100



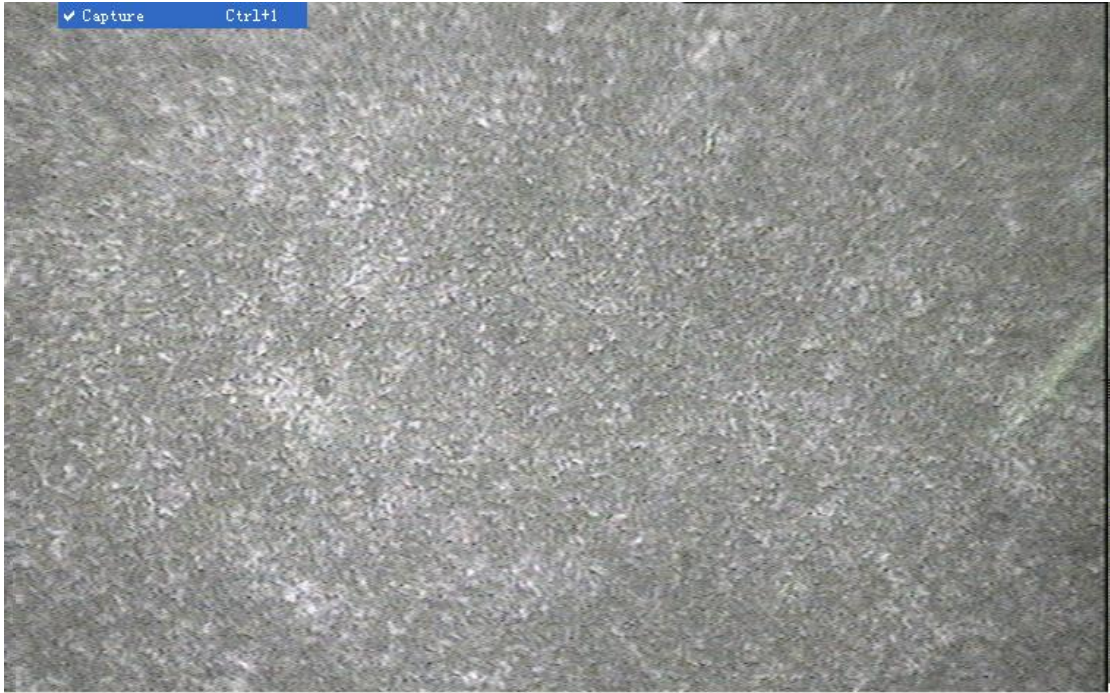
35CrMo 水淬裂纹 200



35CrMo 水淬裂纹 100



35CrMo 水淬 400



35CrMo 水淬 200

